

Euthyroides episcopalis (Busk, 1852). Gordon, 1989, p.16, pl.1A; 3AB.

***Euthyroides episcopalis* (Busk) (Plates 1, A; 3, A,B)**

Carbasea episcopalis Busk, 1852a: 52; MacGillivray 1869: 145; Hutton 1873: 94; Hutton 1880: 187; MacGillivray 1880: 28.

Euthyris episcopalis: Hincks 1882: 164; MacGillivray 1887a: 204.

Flustra episcopalis: Hutton 1891: 104; Hamilton 1898: 194; Jelly 1889: 99; Hutton 1904: 295.

Euthyroides episcopalis: Harmer 1902: 280; Levinsen 1909: 265; Canu & Bassler 1929: 246; Livingstone 1929: 73 Macken 1958: 104; Uttley & Bullivant 1972: 31.

MATERIAL EXAMINED: NZOI Stns B482, B493, B616; also Stn S237, 45°56.5'S, 166°39.0'E, New Resolution Fiord, Edwardson Sound, 30 m depth; and the Cook Strait power cable off Oteranga Bay (coll. K.R. Grange, 28 April 1982, 40 m depth).

DISTRIBUTION: Napier, Wanganui, Cook Strait, Chatham Rise, Fiordland, Puysegur Bank, Stewart Island; 30-134 m. Also Victoria, Bass Strait.

DESCRIPTION: Colony erect, to 10 cm high, anchored by rhizoids; unilamellar, branching dichotomously, the branches from about 1.2 mm wide proximally to 2.4 mm at bifurcations. Zooids 0.64-1.00 x 0.19-0.32 mm, smooth, with a vestigial shield of 2-4 costae, mostly fused, with tiny foramina or sutures between. Orifice with broad shallow sinus, the centre of which is sometimes marked by a notch at the suture between the first pair of vestigial costae. Female zooids with 2-6 costae, some of which have a lumen pore. Ovicell large, prominent, with a median suture line and a conspicuous pair of ectooecial fenestrae. No avicularia. Down the margins of each branch run tubular kenozooids.

REMARKS: The frontal wall in marginal zooids, with just a few spines converging towards the centre of the reduced shield, is very similar to that of *Parafigularia magellanica* (Calvet) (Moyano 1984).

Euthyroides episcopalis is generally found growing in clumps with members of the Catenicellidae. Colonies from the Cook Strait cable were also found growing with *E. jellyae*, which is distinguished by its dark non-branching fan-like fronds.

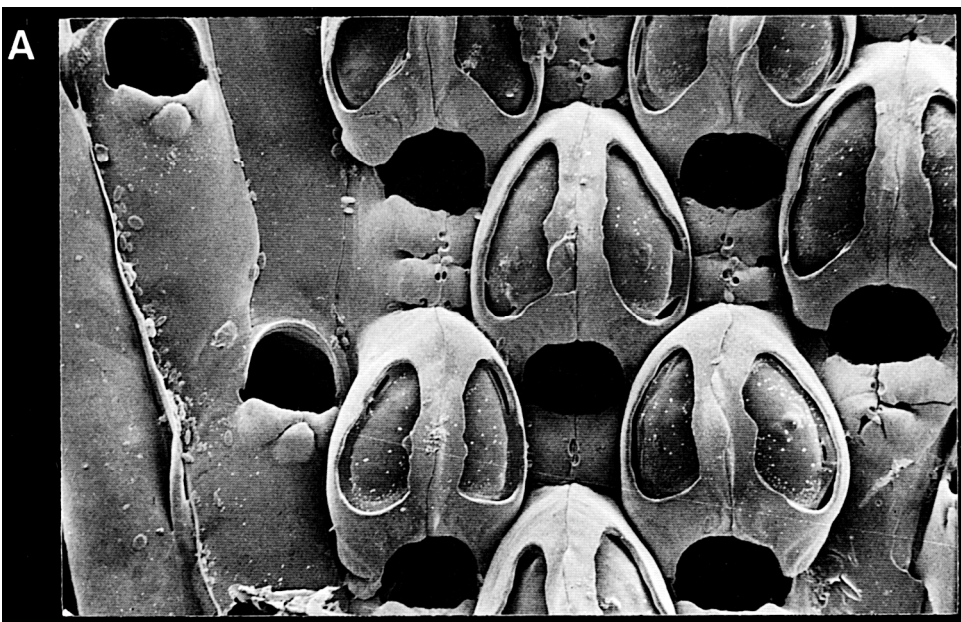
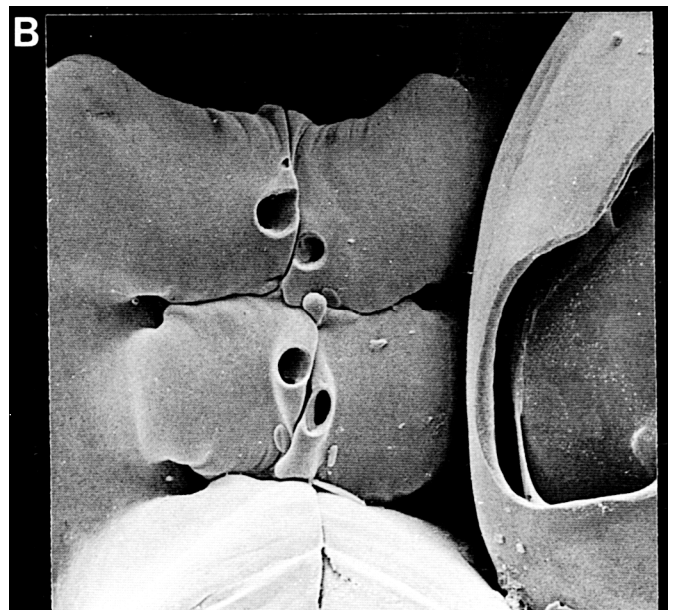


PLATE 3. A, B, *Euthyroides episcopalis* (Busk): A, part of fertile lobe near the left-hand margin of the lobe; B, spinocyst of a female zooid (Edwardson Sound, Fiordland). C, D, *Euthyroides jellyae* Levinsen : D, tilted, to show how the preoral spines project frontally (Poor Knights Islands).