

CRASSIMARGINATELLA MAXILLARIA SP. NOV.

(Fig. 3D)

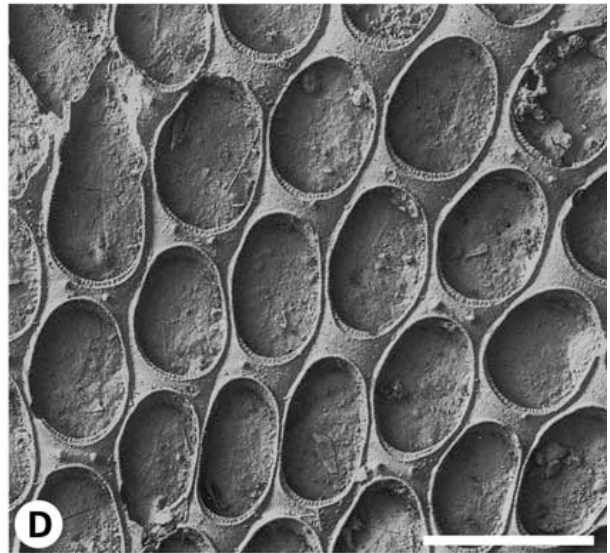
Material

Holotype: NHM 1998.8.4.185, Port Vila Harbour, Efate, Vanuatu.

Paratype: NHM 1998.8.4.237, same locality as holotype.

Description

Colony encrusting, forming large, flat unilaminar sheets. Autozooids irregularly oval to hexagonal, separated by distinct grooves, in quincuncial arrangement. Cryptocyst very narrow, granular; gymnocyst very narrow, smooth, rounded, deeper proximally. One, often two (sometimes lacking) tubercles (? spine bases) on proximal gymnocystal area. Avicularia vicarious, larger than autozooids (0.7–1.0 × 0.4–0.45 mm), distal portion comprising raised, smooth-edged rostrum supporting a spatulate mandible; proximal portion consisting of a shortened opesia. No crossbar. Ovicells not observed.



Measurements

Holotype: means and standard deviations, mm ($n=30$).

Autozooid length 0.66 ± 0.07 ; width 0.37 ± 0.04 .

Etymology

From *maxillaris*, L.—of the jaw. Alluding to the appearance of the vicarious avicularia, the distal portions of which are surrounded by the raised spine bases (?) of the two distal zooids.

Remarks

The vicarious avicularia occur at the division of autozooid rows. The two distal autozooids produce several, generally three or four, spine bases along the edges of the gymnocyst next to the distal end of the avicularium, giving the appearance of a jaw. The spine bases appear similar to those illustrated by Gordon (1984) for his new species *Crassimarginatella* (*Crassimarginatella*) *electra*, though no evidence of smaller lateral spines has been seen in *Crassimarginatella maxillaria*. The species illustrated by Winston (1982) as *Membranipora tenella* Hincks, 1880b, is not Hincks' species, being more similar to *C. maxillaria*; however, there is no evidence of vicarious avicularia in either the description or figure and the gymnocyst in Winston's figure is far more reduced than that seen in *C. maxillaria*.

Distribution

Only one large broken colony of *Crassimarginatella maxillaria* was found, on a discarded wall tile from Port Vila Harbour, Efate.